

Bromyard, Herefordshire, HR7



Price as listed



This brand-new, modern-furnished Omar Westbury (40'x20') luxury park home is perfect for those looking for a detached, easy-to-maintain, bungalow-style property. The home has a modern kitchen with integrated appliances, comfortable living room, two double bedrooms, an en suite and a bathroom.

Nestled in rural Herefordshire, park residents enjoy access to the park-owned country estate with beautiful countryside walks and views across the Bromyard Downs and Malvern Hills. The park has laundry facilities, hair salon and a warm, friendly and active community of residents.

2.5 miles away Bromyard is situated in the valley of the River Frome, near to the county border with Worcestershire. Within the local surroundings of this gorgeous and historic park, you can find a wide range of farms, many of them selling locally grown fresh produce and ingredients.

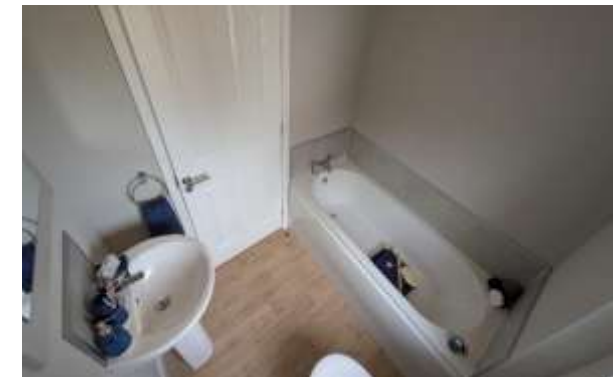
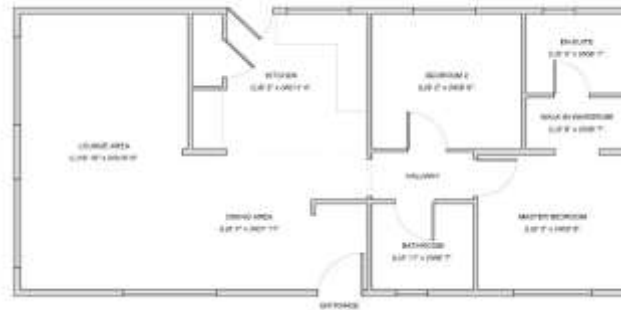
Age restriction: Over 45's
 Pet friendly: Yes
 Site fees: £242.12 per month
 Residential license

House to sell?

Hassle-free Property Part-Exchange is available from Quickmove Properties, with no estate agent fees, no solicitor's fees and no market uncertainty.

Key Features

- Brand new home
- Community Living
- Established Park
- Exceptionally High Specification
- Fully Furnished
- Modern design
- Over 45s
- Part Exchange for a Quick Sale
- Residential Development
- Two Bedrooms



CONTACT US

01793 840917

advice@quickmoveproperties.co.uk

