

# Wimborne, Dorset, BH21



Price as listed



This brand new, modern-furnished Willerby Acorn (924sqFt) luxury park home is perfect for those looking for a detached, easy to maintain, bungalow-style property. The home features an open plan kitchen, dining area and living room, one double bedroom, one twin bedroom, an en suite and a bathroom. The home also has a driveway for 2 cars.

This over 45's development on the outskirts of Bournemouth is pet friendly and is situated within the beautiful countryside. From the development you'll find some of the best scenery, countryside, and beaches in the UK right on your doorstep, it's also adjacent to the Castleman Trailway, a famous countryside cycling and walking route that runs through East Dorset. The gorgeous golden sandy beaches of Bournemouth and Sandbanks are a short drive away and Poole is within easy reach from the park. More than half the county of Dorset is designated as an Area of Outstanding Natural Beauty.

Age restrictions: Over 45's

Pet friendly: Yes

Site fees: £304.70 per month

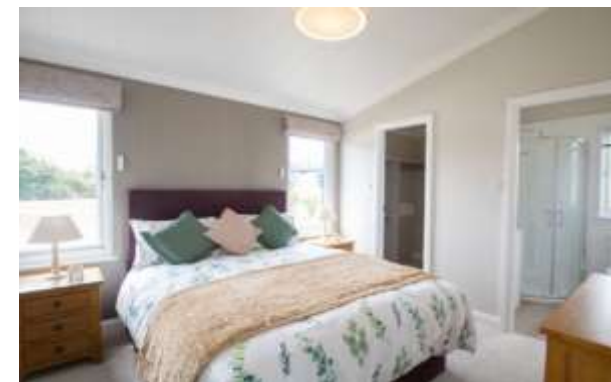
Stock images have been used, the home on site may vary.

### House to sell?

Hassle-free Property Part-Exchange is available from Quickmove Properties, with no estate agent fees, no solicitor's fees and no market uncertainty.

### Key Features

- Brand new home
- Countryside location
- Driveway
- Fully furnished
- Over 45s
- Pet friendly
- Residential development
- Shops and amenities nearby
- Short drive to the coast
- Up to 100% part exchange available



## CONTACT US

01793 840917

[advice@quickmoveproperties.co.uk](mailto:advice@quickmoveproperties.co.uk)

**Quickmove**  
PROPERTIES

