

# Grantham, Lincolnshire, NG23



Price as listed



This brand-new, modern-furnished Omar Ikon (50'x20') luxury park home is perfect for those looking for a detached, easy-to-maintain, bungalow-style property. The home has a modern kitchen with integrated appliances, comfortable living room with electric fireplace, two double bedrooms, an en suite and a bathroom. The home also has parking for 2 cars.

Located on the outskirts of Marston Village, this park has a countryside setting while also being close to local amenities. Marston village and the nearby villages of Foston and Hougham are typical traditional villages with pubs, corner shops and markets. The development is 3 miles from Grantham, a market town with high street shops and usual town amenities including a medical centre and supermarkets. Larger shopping centres can be found in the cities of Leicester and Nottingham, and Boundary Outlet is very close to the development. For golf lovers, Belton Woods Hotel Spa & Golf Resort down the road from the development.

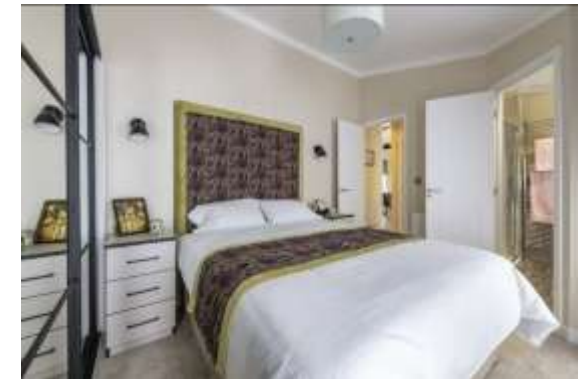
Age restriction: Over 40s  
 Pet friendly: Yes  
 Site fees (at time of listing): £220 per month  
 Residential license

**House to sell?**

Hassle-free Property Part-Exchange is available from Quickmove Properties, with no estate agent fees, no solicitor's fees and no market uncertainty.

### Key Features

- Brand new home
- Countryside location
- Fully Furnished
- Over 40's
- Parking space
- Part Exchange Available
- Pet-Friendly
- Private, Gated Development
- Residential Development



## CONTACT US

01793 840917

[advice@quickmoveproperties.co.uk](mailto:advice@quickmoveproperties.co.uk)

